



Weekly Equities Note

Week Ending : 3rd February 2023

Key Highlights:

Weekly Statistics	This Week	Previous Week	w/w % chg
Turnover (KES M)	853.86	1,060.59	(19.49)
Volume (M)	30.96	45.86	(32.49)
Foreign Participation (%)	87.00	22.52	286.32
NASI	129.24	126.07	2.51
NSE-20	1,664.14	1,060.59	56.91
NSE-25	3,179.12	3,137.07	1.34

Market Movers	Price	Volume (M)	Mkt share (%)
Safaricom	24.50	13.92	44.96
Equity Group	38.20	2.28	7.36
Co-operative Bank	45.80	2.06	6.65

Top Gainers	This Week	w/w % chg	Volume
Olympia Capital Holdings	14.20	18.33	2,200.00
Kenya Orchards	122.00	10.91	1,600.00
Gold	23.00	9.52	24,300.00

Top Losers	This Week	w/w % chg	Volume
Car & General (K)	35.20	-9.74	2,300.00
Nairobi Business Ventures	28.00	-9.68	1,600.00
E.A.Portland Cement	0.21	-8.70	109,600.00

Index	Country	YTD (%)	w/w (%)
NSEASI	Kenya	1.39%	2.51%
UGSINDX	Uganda	-0.08%	-0.08%
DARSDSEI	Tanzania	2.26%	1.87%
RSEASI	Rwanda	0.07%	0.00%
BRVM	West Africa	-1.37%	0.97%
NGXINDX	Nigeria	5.78%	2.95%
GGSECI	Ghana	-4.14%	-3.56%
ZHIALLSH	Zimbabwe	27.13%	11.92%

Week That Was

Benchmark Indices - All indices recorded mixed trends much like the mixed performances in the previous week. NASI gained **2.51%** to close the week at **KES 129.24** from **KES 126.07** while the NSE-20 declined **0.60%** to close the week at **KES 1,664.14** from **KES 1,674.24**.

Market Performance - Equity turnover decreased by **19.49%** to **KES 0.85Bn** from **KES 1.06Bn**. TPS Eastern Africa was the highest gainer appreciating **(+18.33%)** closing at **KES 14.20**. Other top gainers included Kapchorua Tea **(+10.91%)** at **KES 122.00** and Sasini **(+9.52%)** at **KES 23.00**. The top losers were Crown Paints **(-9.74%)** closing at **KES 35.20**, Unga Group **(-9.68%)** closing at **KES 28.00**, and Uchumi **(-8.70%)** closing at **KES 0.21**.

Foreign Participation – During the week, we saw a change in foreign participation with foreigners turning to net sellers by recording net outflows of **KES 29.36Mn** in foreign activity from net inflows of **KES 49.39Mn** recorded last week.

Weekly Highlight

Equity Group (EQTY)

During the week, Equity Group, through Equity Bank Kenya (EBKL), announced the completion of the acquisition of certain assets and liabilities of Spire Bank Limited.

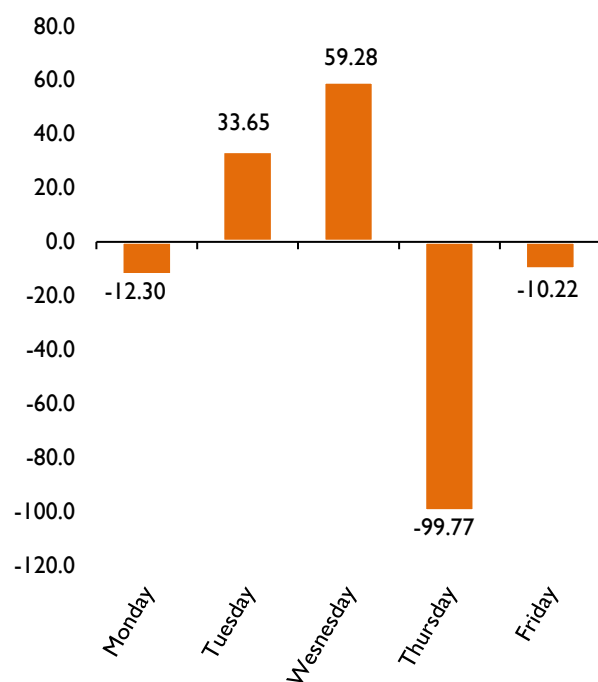
As per the initial communication, EBKL acquired approximately 20,000 deposit customers with a value of KES 1.30Bn which is 0.25% of EBKL customer deposits of KES 525.75Bn. Additionally, EBKL likely to acquired 3,700 loan customers with a net carrying value of KES 945.00Mn as of 30th June 2022. The loan book represents an estimated 0.23% of EBKL's net loan book of KES 417.48Bn.

We do not expect the completion of the acquisition of Spire bank by EBKL to carry any significant impact on Equity Group's financials. Notably, EBKL already, as of Q3 2022, been having a total monthly salary remittance of KES 1.80Bn from teachers. Furthermore, EBKL has lent 43,000 teachers an estimated KES 33.00 Bn.

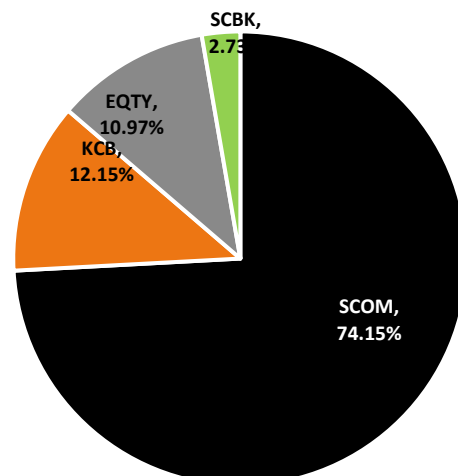
We maintain our BUY recommendation as we believe the counter is still undervalued. EQTY closed the week at KES 45.80 a 2.92% YTD gain.

(Source: Company Filings)

Weekly Trading Activity - Net Foreign Position



Weekly Trading Activity by Turnover



Weekly Equities Summary

Stock	Price	Δ YTD %	Δ WoW %	M.Cap USD M	M.Cap %	P/E x	P/B x	Div Y %
▲ Safaricom	24.50	1.45%	5.38%	7,878.7	48.75%	14.08	6.82	0.00%
▼ ABSA Group	12.40	0.81%	-0.40%	540.6	3.34%	10.70	1.20	6.69%
▼ Diamond Trust Bank	49.90	-0.20%	-2.63%	112.0	0.69%	3.89	0.18	6.01%
▲ Equity Group	45.80	2.92%	0.88%	1,387.2	8.58%	7.28	1.15	0.00%
▼ H. Finance Group	3.24	1.57%	-1.22%	10.0	0.06%	24.98	0.16	0.00%
▲ I&M Holdings	17.15	0.88%	0.88%	227.6	1.41%	6.06	0.40	0.00%
▼ KCB Group	38.20	0.26%	-0.78%	985.3	6.10%	4.03	0.65	0.00%
▼ NCBA Group	35.50	-9.78%	-4.05%	469.4	2.90%	469.61	93.05	0.00%
▼ Stanbic Holdings	110.75	8.58%	-1.12%	351.4	2.17%	9.13	0.75	6.59%
▲ Standard Chartered	158.00	10.68%	0.64%	479.2	2.96%	11.04	1.06	2.28%
▼ Co-operative Bank	12.45	1.22%	-1.19%	586.3	3.63%	4.27	0.72	0.00%
— Kenya Airways	3.83	0.00%	0.00%	174.7	1.08%	-1.37	-0.26	0.00%
▼ Longhorn Publishers	3.20	6.67%	-1.54%	7.0	0.04%	21.84	1.11	0.00%
▼ Nation Media Group	15.00	-5.96%	-0.66%	22.9	0.14%	5.79	0.35	0.00%
▲ Standard Group	10.50	0.48%	3.45%	6.9	0.04%	-2.86	1.15	0.00%
▲ TPS Eastern Africa	14.20	6.37%	18.33%	20.8	0.13%	-2.14	0.48	0.00%
▲ WPP Scangroup	3.00	-0.33%	0.33%	10.4	0.06%	-30.58	0.25	3.55%
▼ KenGen	2.84	-11.80%	-7.49%	150.3	0.93%	3.66	0.09	10.56%
▼ Kenya Power & Light.	1.52	-2.56%	-1.94%	23.8	0.15%	0.85	0.05	0.00%
▲ Total Kenya	23.55	-1.26%	1.07%	33.1	0.20%	5.18	0.14	19.93%
▼ Britam Holdings	5.10	-1.92%	-2.67%	103.3	0.64%	178.44	0.67	0.00%
▲ CIC Insurance Group	2.00	2.56%	5.82%	42.0	0.26%	11.28	1.42	18.11%
▼ Jubilee Holdings	185.75	-6.54%	-4.38%	108.0	0.67%	2.07	0.32	4.55%
▼ Kenya Re Insurance	1.77	-3.28%	-1.67%	39.8	0.25%	1.67	0.13	11.30%
▼ Liberty Kenya Hold.	4.60	-17.86%	-4.17%	19.8	0.12%	30.12	0.28	0.00%
— Sanlam Kenya	8.34	-12.94%	0.00%	9.6	0.06%	-2.21	2.02	0.00%
— BOC Kenya	70.00	-1.06%	0.00%	11.0	0.07%	12.61	0.86	0.00%
▼ British. A. Tobacco	445.00	-3.26%	-0.95%	357.2	2.21%	6.86	2.97	0.00%
▼ Carbacid Invest.	12.25	2.08%	-0.81%	25.1	0.16%	4.41	0.82	0.00%
▲ East Afr. Breweries	178.00	6.27%	3.49%	1,129.8	6.99%	23.94	5.33	0.00%
▼ Eveready E.A	0.69	0.00%	-1.43%	1.2	0.01%	-17.17	67.74	0.00%
— Mumias Sugar	0.28	0.00%	0.00%	3.4	0.02%	-0.06	0.57	0.00%
▲ Centum Investment	8.74	4.55%	0.23%	46.7	0.29%	-4.34	0.12	3.78%
▲ Home Afrika	0.34	6.25%	6.25%	1.1	0.01%	-0.49	0.05	0.00%
▲ Trans-Century	1.27	36.56%	1.60%	3.8	0.02%	-0.29	0.05	0.00%
▲ Nairobi Sec. Exch.	6.70	-1.18%	4.69%	14.0	0.09%	13.12	0.83	0.00%
— ARM Cement	5.55	0.00%	0.00%	42.8	0.26%	-5.92	0.19	0.00%
▼ Bamburi Cement	29.10	-7.62%	-1.36%	84.8	0.52%	7.65	0.30	10.31%
— E.A Portland Cement	6.38	-6.18%	0.00%	4.6	0.03%	0.30	0.03	0.00%
▼ Crown Paints Kenya	35.20	-15.89%	-9.74%	40.2	0.25%	6.85	1.46	0.00%
▼ Kakuzi	405.00	5.19%	-3.57%	63.7	0.39%	24.83	1.43	4.44%
▲ Kapchorua Tea	122.00	7.73%	10.91%	7.7	0.05%	8.22	0.57	7.96%
▲ Sasini	23.00	2.45%	9.52%	42.1	0.26%	12.49	0.38	2.17%
▲ Williamson Tea	165.00	3.13%	2.64%	23.2	0.14%	12.67	0.47	9.78%
▼ Ilam Fahari I-REIT	6.14	-5.83%	-2.54%	8.9	0.00%	-8.96	0.31	0.00%

Corporate Actions

Counter	Interim Dividend	Final Dividend	Book Closure	Dividend Payment
Kengen Plc		KES 0.20	26 th January 2023	30 th March 2023
Car & General		KES 0.80	24 th February 2023	23 rd March 2023
EABL	KES 3.75		16 th February 2023	28 th April 2023

CONTACTS:

Research Desk

Solomon Kariuki
Research Analyst

Faith Sang
Research Analyst

Lisa Koome

Email: research@aib-axysafrica.com

Equities Dealing

Nina Goswami

Bernard Kung'u

Benard Gichuru

Brian Tanui

Samuel Githinji

Sheema Shah

Samuel Wachira

Benson Ngugi

Bond Dealing

Crispus Otieno

Titus Marenye

Aundrina Musyoka

Kenneth Minjire

Email: trading@aib-axysafrica.com

Disclaimer

AIB-AXYS Africa and its parent company AXYS Group seek to do business with companies covered in their research reports. Consequently, a conflict of interest may arise that could affect the objectivity of this report. This document should only be considered a single factor used by investors in making their investment decisions. The reader should independently evaluate the investment risks and is solely responsible for their investment decisions. The opinions and information portrayed in this report may change without prior notice to investors.

This publication may not be distributed to the public media or quoted or used by the public media without prior and express written consent of AIB-AXYS Africa or AXYS Group. This document does not constitute an offer, or the solicitation of an offer, for the sale or purchase of any security. Whilst every care has been taken in preparing this document, no representation, warranty or undertaking (express or implied) is given and no responsibility or liability is accepted by AIB-AXYS Africa or any of its employees as to the accuracy of the information contained and opinions expressed in this report.